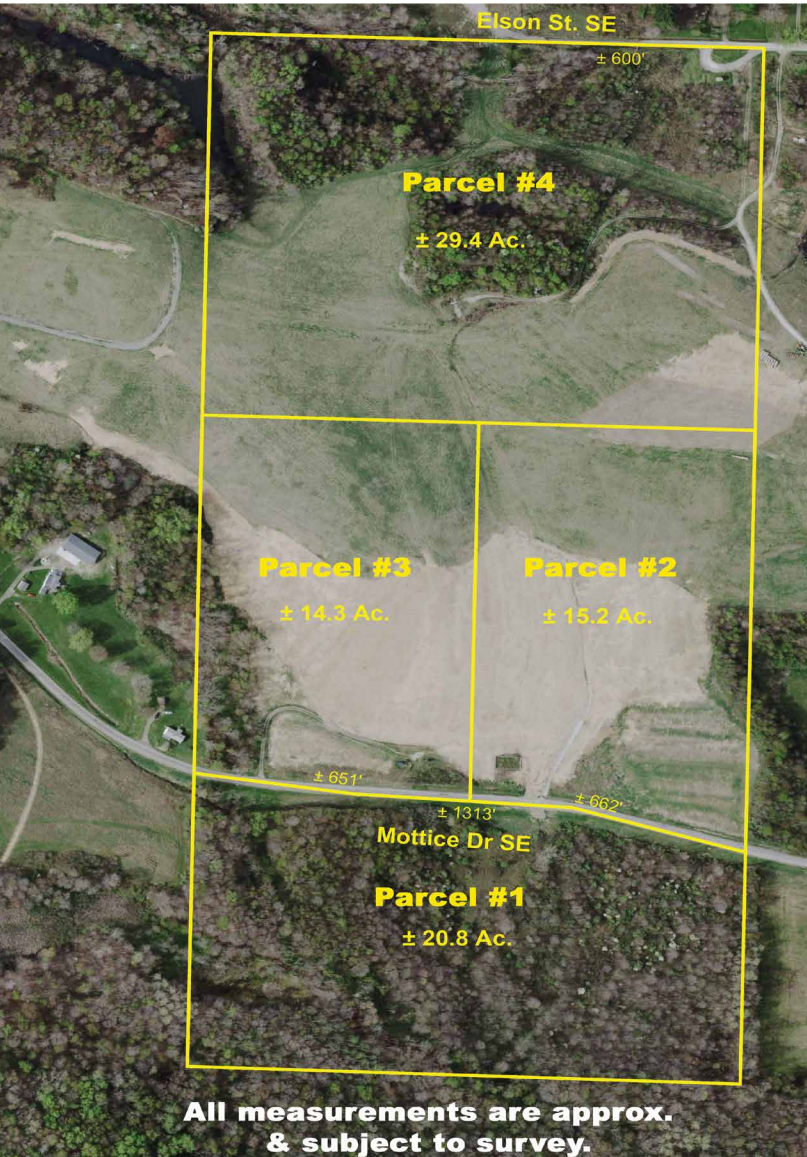


ABSOLUTE AUCTION

SATURDAY, JUNE 13, 2026, 10:30 AM
LIVE ONSITE WITH ONLINE BIDDING AVAILABLE



LAND



AUCTION HIGHLIGHTS

- Exciting Land Auction!
- Offered In Parcels & Entirety
- Open & Wooded Land
- Stark Co., Sandy Twp.
- No Zoning

REAL ESTATE

80 acres, open and wooded land with frontage on Mottice Dr. and Elson St. Rolling land with good access. Nice hunting and recreational parcels. Property will be offered in parcels and as entirety. Property divided as follows:

Parcel #1. Approx. 20.8 acres, predominantly all wooded land with approx. 1,313 ft. frontage on Mottice Dr. Nice nature and wildlife parcel!

Parcel #2. Approx. 15.2 acres, open rolling land with beautiful view! Early cutstone barn foundation on this parcel. Approx. 662 ft. frontage on Mottice Dr.

Parcel #3. Approx. 14.3 acres, predominantly rolling land with approx. 651 ft. frontage on Mottice Dr.

Parcel #4. Approx. 29.4 acres, open and wooded land with approx. 600 ft. frontage on Elson St. Nice hunting and recreational parcel!

Note: Walk the land at your convenience. Gas and oil rights do not transfer. Brochures with map on location.

TERMS ON REAL ESTATE

10% down auction day, balance due at closing. A 10% buyer's premium will be added to the highest bid to establish the purchase price. Any desired inspections must be made prior to bidding. All information contained herein was derived from sources believed to be correct. Information is believed to be accurate but not guaranteed. Property to be offered as a Multi Par auction and sold whichever way it brings the most.



DOUGLAS L. MILANO
AUCTIONEER/REALTOR
330.205.2196
dmilano@kikocompany.com



THERESA BLOCHER
AUCTIONEER/REALTOR
330.495.3789
blocher@kikocompany.com

80 ACRES

MOTTICE DR. SE,
WAYNESBURG, OH 44688

www.kikoauctions.com | 800.533.5456

Information is believed to be accurate but not guaranteed.
KIKO Auctioneers



MLS



Scan for auction details, including directions.

*Absolute Auction.
All sells to the highest bidders on location.*